



SPECIFICATIONS

- Lot sizes: 4.54 or 7.60 acres
- Conveniently located between Hwy 41/45 & I-43
- Municipal sewer/water
- Zoned ID 40 (Industrial)

For more information visit www.zilberpropertygroup.com

DAN MCCARTHY

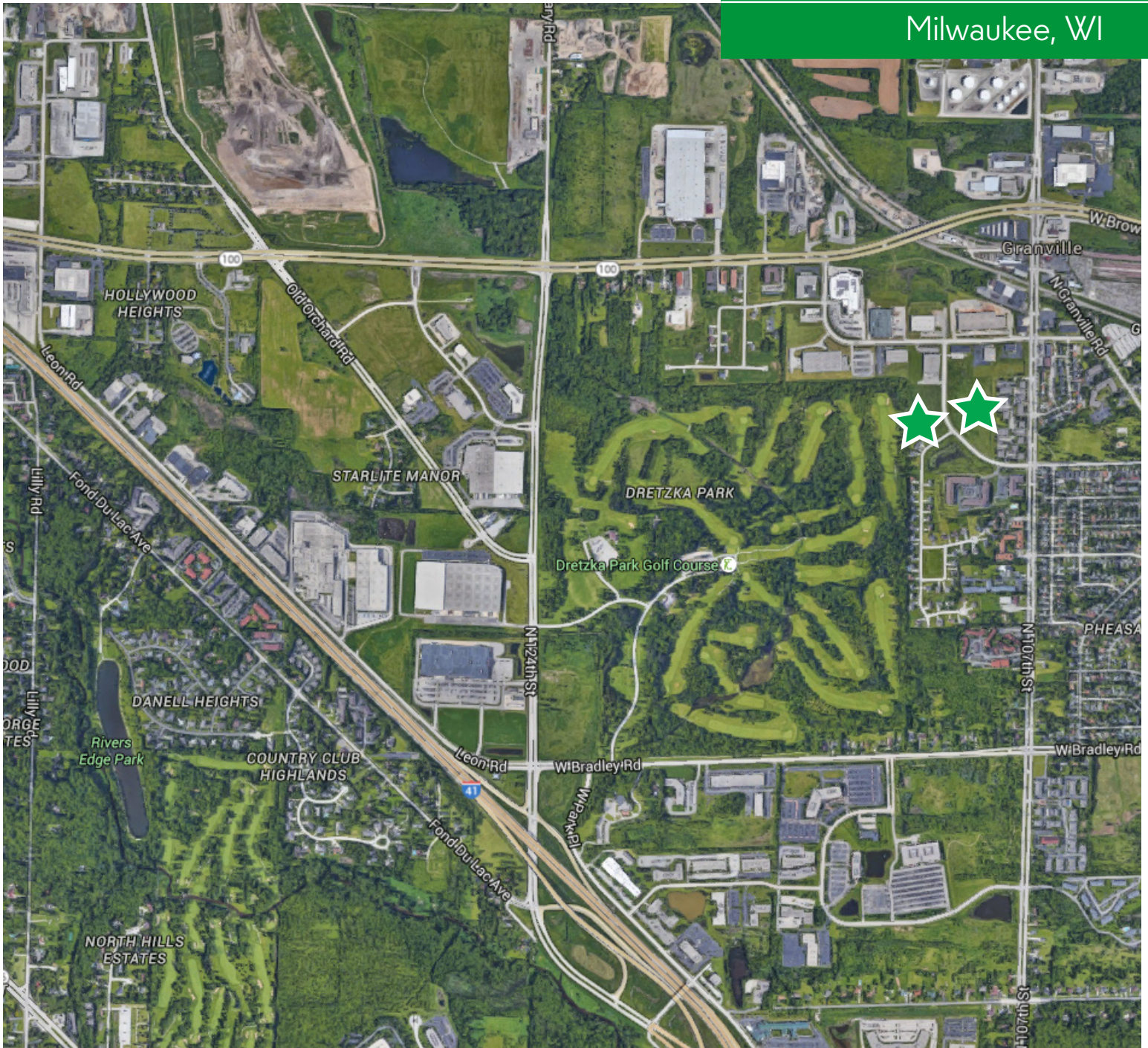
Director of Office & Leasing Development
Dan.McCarthy@Zilber.com
(414) 274-2546

LISA BRAUN

Business Development & Leasing Associate
Lisa.Braun@Zilber.com
(414) 274-2625

ZILBER PROPERTY GROUP

710 North Plankinton Avenue
Milwaukee, WI 53203
(414) 274-2623



For more information visit www.zilberpropertygroup.com

DAN MCCARTHY

Director of Office & Leasing Development
Dan.McCarthy@Zilber.com
(414) 274-2546

LISA BRAUN

Business Development & Leasing Associate
Lisa.Braun@Zilber.com
(414) 274-2625

ZILBER PROPERTY GROUP

710 North Plankinton Avenue
Milwaukee, WI 53203
(414) 274-2623